



CRE TECHNOLOGY PRODUCT BROCHURES



CERTIFICATE

CRE TECHNOLOGY

Hereby Officially Declares
as the sales distributor and the technical distributor for **CRE Technology**
products in the country of Philippines for industrial and/or marine applications:

:

ELECDDES TRADING & TECHNICAL SERVICES

Which address is No. 22 Continental Street, Greenview Village, Pamplona 3
LAS PINAS CITY, PHILIPPINES 1742

Products Range:

- Generator Controller
- Paralleling
- Marine
- Battery Chargers
- Monitoring
- Softwares
- Accessories
- The complete range of CRE Technology products for industrial and marine applications.

Validity of the certificate:

From 01/01/2020 to 31/12/2020

This certificate can be renewed

CRE TECHNOLOGY SARL
Allée Charles-Victor Naudin - Zone des Templiers
Sophia Antipolis - 06410 BIOT - FRANCE
Tél. +33 (0) 4 92 38 86 82
Fax +33 (0) 4 92 38 86 83
SIRET 488 625 333 00015

CRE Technology

Richard HAMON
Sales Manager

GENSYS 2.0 LT



All-in-one genset control and paralleling unit

- Compact “all-in-one” module
- Isolated serial ports: RS485, 2 CAN bus,
- SD card reader , Ethernet
- New multi-function graphic display
- Fully compatible with all speed governors and AVRs
- J1939 communications with electronic engines
- Mains paralleling function



The GENSYS 2.0 LT is a control unit designed for generator electrical panels.

This “all-in-one” unit combines all necessary functions:

- **Three phase mains failure**
- **Engine start/stop and protections**
- **Alternator control and protections**
- **Mechanical parameters display**
- **Electrical parameters display**
- **Genset synchronization**
- **Load sharing and kW control**
- **Load sharing and kVAR control**

GENSYS 2.0 LT is configurable via its front panel or via a PC with CRE Config Software.

The GENSYS 2.0 LT controller has analog load sharing lines and is compatible with all types of analog load sharing modules.

MINIMUM OPTIONS

This compact controller is offered with a minimum of options to fit all types of application without expensive add-on packages. The GENSYS 2.0 LT unit is recommended for all types of power plant, from 1 to 32 generators.

For specific needs, GENSYS 2.0 LT can include the following options:

- Phase shift compensation (ie: Dyn11)
- External start module management

INTER-UNIT ISOLATED CAN BUS

The GENSYS 2.0 LT features an isolated CANbus dedicated to inter-module communication (dead busbar management, static paralleling, kW and kVAR load sharing...).

CANbus technology provides high reliability communication while maintaining low wiring cost and complexity.

APPLICATIONS

- Turbo-alternator
- Synchronization and power management module (without engine start sequence).
- 1 generator in change over mode with mains.
- 1 generator in no break charge over.
- 1 generator in parallel with mains: base load or peak shaving.
- 2 to 32 gensets in parallel and change over with mains.
- 2 to 32 gensets in parallel and paralleled with mains for load transfer. In this case, the MASTER 2.0 is used for mains paralleling via CAN bus.
- Static paralleling (engine stopped).

CRE Technology has developed a new software, that can be used with the GENSYS 2.0 LT module. It is PC operated via an Ethernet communication port.

This user friendly software allows you to control, configure and monitor your power plant.



After logging, you will access the 3 modes of the interface:

Scada mode:

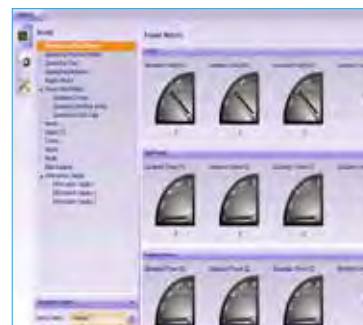
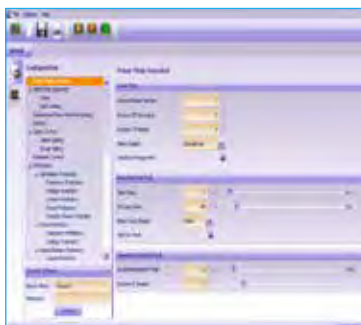
Monitors electrical, mechanical parameters and above all supervises your engines in real time.

Configuration mode:

Configures the GENSYS 2.0 LT parameters by changing functions like input / output, start/stop or speed control, amongst others.

System mode:

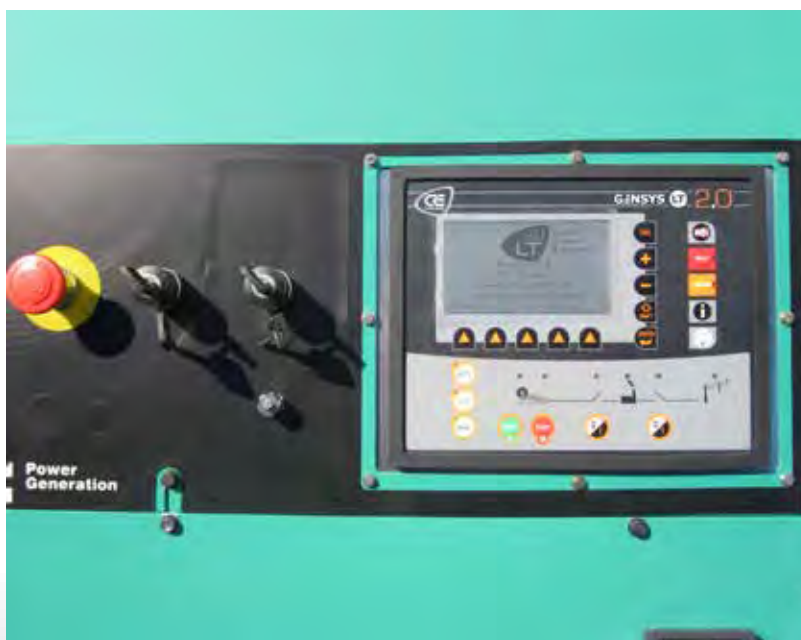
Configures general parameters (date, time, screen saver, language,...). CRE Config software can configure and monitor multiple GENSYS 2.0 simultaneously.



GENSETS WITH MAINS

A MASTER 2.0 unit can be used when several generators are paralleled with mains:

- CAN bus communication with GENSYS 2.0 LT units
- Three phase mains failure
- Paralleled gensets with several mains control
- Electrical protection for power plant and mains
- Electrical parameters display for power plant and mains
- Manual and automatic paralleling with mains (frequency, phase and voltage)
- Power factor control when paralleling with mains.
- kW power management with several modes:
- No break change over with load transfer
- Permanent paralleling in base load
- Permanent paralleling in peak shaving mode (export/import)



GENSYS 2.0 LT



FEATURES

Control and management

- Manual and automatic engine control.
- J1939 compatibility (Cummins, Volvo, Scania, MTU, CAT...)
- Automatic start/stop control depending on load demand.
- Dead busbar management.
- Isochronous or droop kW load sharing control (via CAN bus serial port, up to 32 generators)
- Constant voltage or droop kVAR load sharing control (via CAN bus serial port, up to 32 generators)
- Power factor control when paralleling with mains.
- kW control (base load or peak shaving) when paralleling with mains.

Protections

- Generator electrical protections: <F, >F, <U, >U, >I, >In, >P, <P, <-P, >Q, <Q, <-Q
- Mains electrical protections (option) : <F, >F, <U, >U, >P, <P, <-P, >Q, <Q, <-Q, df/dt, vector jump.
- Phase sequence protection, phase shift compensation.

Synchronization

- Manual and automatic frequency and phase synchronization (differential frequency meter + synchroscope available on screen).
- Manual and automatic voltage synchronization (differential voltmeter available on screen).
- Static paralleling.

Information display

- Engine parameters display: oil pressure, water temp, speed, hours run meter...
- Generator electrical parameters display:
 - Phase-phase Voltage (3 phase RMS)
 - Phase-neutral Voltage (3 phase RMS)

- Current (3 phase RMS)
- Frequency
- Active power (3 phase + total)
- Reactive power (3 phase + total)
- Power factor (3 phase + total)
- Active power energy (kWh)
- Reactive power energy (kVARh)
- Mains electrical parameters display:
 - Phase-phase Voltage (3 phase RMS)
 - Current (3 phase)
 - Frequency
 - Active power
 - Reactive power
 - Power factor
 - Import active power energy (kWh)
 - Import reactive power energy (kVARh)

Alarms and events

- The last 50 alarms and last 50 shutdowns are recorded in non volatile memory.
- Data logging.

Other

- "Watchdog" digital output for microprocessor life signal.

CHARACTERISTICS

Current, voltage and frequency

- DC voltage power supply input: 8 to 40V_{DC}, 750mA at 12V_{DC} and 400mA at 24V_{DC}.
- AC voltage inputs: 100 to 480V_{AC}, 100mA max. Neutral terminal does not need to be connected.
- AC current inputs: 0 to 5A, 1VA. Each phase is isolated from the others.
- AC current overload: 15A during 10s.
- Frequency measurement: 45 to 70 Hz – 15V_{AC} minimum between phase and neutral.
- Voltage control signal: AVR control either by a +/-5V_{DC} output with adjustable span and offset or by voltage+/voltage- contacts.

Environment

- Operating temperature: -20 to +70°C
- Storage temperature: -30 to +80°C
- Humidity: 5 to 95%. Circuits tropicalization for normal operation in humid conditions.
- IP65: front panel / IP20 : rear panel

Inputs, outputs

- Digital inputs: NO or NC to ground.
- Emergency stop input: Norm. Closed 24V.
- Relay outputs (crank and fuel): 5A. The 24V is provided through the emergency push button.
- Relay outputs (breakers): 5A, 230V_{AC} max. NO + NC available.
- Transistor outputs: 350mA, over-current protected.
- Analog inputs (oil pressure and water temp): 0 to 400 Ω. Calibration fully configurable.
- Analog inputs (spare 1 and spare 2): 0 to 10kΩ.
- Calibration for speed and frequency control is made either by a +/-10V_{DC} output with adjustable span and offset or by speed+/speed- contacts.
- Magnetic pick up input: 100 to 10.000Hz, 2V_{AC} minimum.
- PWM output for CAT and Perkins engines

Ports

- Isolated communication ports are available:
 - RS485 for Modbus RTU (read and write)/ male Sub-D 9 pins 120 Ω resistors selected by micro-switch.
 - CAN bus for inter-GENSYS/ MASTER 2.0 connection: male Sub-D 9 pins 120 Ω resistors selected by micro-switch
 - CAN bus dedicated to options J1939: 120 Ω resistors selected by micro-switch
 - Ethernet: PC communication/ Modbus TCP
 - SD card reader

Size and weight

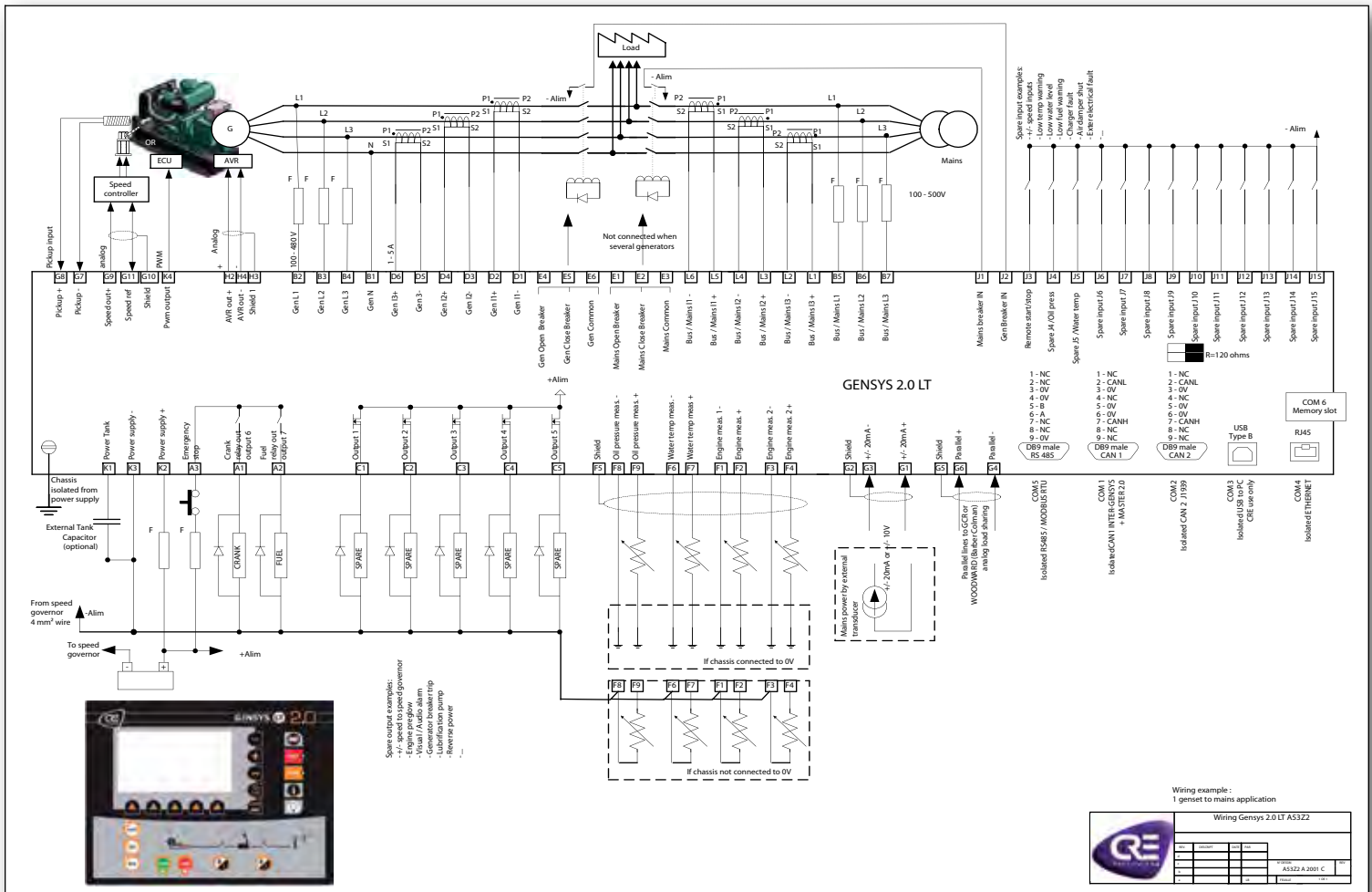
- Size: 248x197x57mm (9.76x7.76x2.24in)
- Panel cut out: 177x228mm (6.97x8.98in)
- Weight: 1.9kg (4.2lb)

Certifications

- European Union Directives: EN 50081-2, EN 50082-2, 73/23EEC

Other

- LCD characteristics: 114x64mm, 60 cd/m² backlight, 3 character sizes.
- Terminals: 2 piece connectors, 2,5mm².
- Standard languages: English, Spanish, French, Italian
- Other custom languages: downloadable on request



PART NUMBER
A532Z

SOFTWARE
CRE Config

CABLE
A53W1

ASSOCIATED PRODUCTS
Upgrade: GENSYS 2.0
Complementary: Master 2.0

GENSYS 2.0



All-in-one genset control and paralleling unit with integrated PLC

- Compact “all-in-one” module
- I/O flexibility
- Internal logic sequences, programmable by equations and the Easy PLC software
- New multi-function graphic display
- Isolated serial ports: RS485, 2 CAN bus,
- SD card reader, Ethernet
- J1939 communications with electronic engines
- Fully compatible with all speed governors and AVR



The GENSYS 2.0 is a control unit designed for generator electrical panels.

This “all-in-one” unit combines all necessary functions:

- Three phases mains failure
- Engine start/stop and protections
- Alternator control and protections
- Mechanical parameters display
- Electrical parameters display
- Genset synchronization
- Load sharing and kW control
- Load sharing and kVAR control

GENSYS 2.0 is configurable via its front panel or via a PC with CRE Config software. It has an embedded Web site which is password protected.

The GENSYS 2.0 controller has analog load sharing lines and is compatible with most of the types of analog load sharing modules.

PROGRAMMING BY EQUATIONS

The GENSYS 2.0 controller is a real PLC unit where equations and sequences can be programmed directly by the user with text editor software or Easy PLC software.

INPUTS / OUTPUTS WITH NO LIMIT

The number of inputs/outputs that can be added is one of the most important on the market. Extension modules (DIN rail mounting) can be added on the CAN bus. This extends a large number and a large diversity of inputs/outputs up to 128 digital inputs, 64 digital outputs, 44 analog inputs, 32 analog outputs and CANopen standard module.

MINIMUM OPTIONS

The GENSYS 2.0 is offered with a minimum of options to fit all types of application without expensive add-on packages. The standard GENSYS 2.0 unit is recommended for all types of power plant, from 1 to 32 generators.

For specific needs, the following options are available :

- Mains paralleling
- Phase shift compensation (ie: Dyn11)
- External start module management

INTER-UNIT ISOLATED CAN BUS

The GENSYS 2.0 features an isolated CANbus dedicated to inter-module communication (dead busbar management, static paralleling, kW and kVAR load sharing...). CANbus technology provides high reliability communication while maintaining low wiring cost and complexity.

added
value

EQUATIONS : Embed your knowledge!

GENSYS 2.0 integrates a real PLC unit in which user equations and sequences can be written using a simple text editor or graphically designed using the Easy PLC software.

STATIC PARALLELING (Black start synchronization)

In less than 10 seconds, your power plant in standby mode starts all the gensets and fully synchronizes them, meanwhile the breakers are closing on the bus bars.

Fast response time for heavy load requests.

Static paralleling can be necessary for large electric motor or turbine starting. It is also very useful when loads cannot be shed, in hospitals or heavy industries. In less sensitive industries, a smaller UPS can be used, reducing investment and maintenance costs, without extra investment on the genset power plant side.

Progressive magnetization of the step-up transformers.

The transformer is magnetized with a low voltage before receiving the genset power. Your power plant benefits from important cost gains (cable, transformer consumption) and better efficiency (quick power plant availability, more stable power...).

CRE Technology is familiar with this specification which is included as standard in the GENSYS 2.0.



COMPATIBILITY

Thanks to its versatile connectivity the GENSYS family is compatible with peripheral devices:

- Electronic engines: CAN bus J1939/ MTU MDEC
- Speed governors: $\pm 10 V_{DC}$ /Pulse/ PWM 500Hz
- AVR: 0-10 k Ω /Pulse
- PLC/HMI: Modbus RTU RS485/ Modbus TCP Ethernet
- Power transducers: 4-20mA
- I/O extensions: CANopen
- Mains: CAN inter-GENSYS
- Analog load sharers

APPLICATIONS

- Turbo-alternator
- Synchronization and power management module (without engine control).
- 1 generator in change over mode with mains.
- 1 generator in parallel with mains: Base load or Peak shaving.
- 2 to 32 gensets in parallel and change over with mains.
- 2 to 32 gensets in parallel and paralleled with mains for load transfer. In this case, the MASTER 2.0 is used for mains paralleling via CAN bus.
- Static paralleling
- Tie breaker management.

GENSETS WITH MAINS

When several generators are paralleled with mains, the MASTER 2.0 is used (using CAN bus communication) for:

- Three phase mains failure
- Paralleled gensets with several mains control
- Electrical protection for power plant and mains
- Electrical parameters display for power plant and mains
- Manual and automatic paralleling with mains (frequency, phase and voltage)
- Power factor control when paralleling with mains.
- kW power management with several modes:
 - No break change over with load transfer
 - Permanent paralleling in base load
 - Permanent paralleling in peak shaving mode (export/import)

GENSYS 2.0



FEATURES

Control and management

- Manual and automatic engine control.
- J1939 compatibility (Cummins, Volvo, Scania, MTU, CAT...)
- Automatic start/stop control depending on load demand.
- Dead busbar management.
- Isochronous or droop kW load sharing control (via CAN bus, up to 32 generators)
- Constant voltage or droop kVAR load sharing control (via CAN bus, up to 32 generators)
- Power factor control when paralleling with mains.
- kW control (base load or peak shaving) when paralleling with mains.

Protections

- Generator electrical protections: <F, >F, <U, >U, >I, >In, >P, <P, <-P, >Q, <Q, <-Q
- Mains electrical protections (option) : <F, >F, <U, >U, >P, <P, <-P, >Q, <Q, <-Q, phase shift, df/dt.
- Phase sequence protection, phase shift compensation.

Synchronization

- Manual and automatic frequency and phase synchronization (differential frequency meter + synchroscope available on screen).
- Manual and automatic voltage synchronization (differential voltmeter available on screen).

Information display

- Engine parameters display: oil pressure, water temp, speed, hours run meter (5 programmable information pages)
- Generator electrical parameters display:
 - Phase-phase Voltage (3 phase RMS)
 - Phase-neutral voltage (3 phase RMS)
 - Current (3 phase RMS)
 - Frequency
 - Active power (3 phase + total)
 - Reactive power (3 phase + total)

- Power factor (3 phase + total)
- Active power energy (kWh)
- Reactive power energy (kVARh)
- Mains electrical parameters display:
 - Phase-phase Voltage (3 phase RMS)
 - Current (3 phase)
 - Frequency
 - Active power
 - Reactive power
 - Power factor
 - Import active power energy (kWh)
 - Import reactive power energy (kVARh)

Alarms and events

- The last 50 alarms and last 50 faults are recorded in non volatile memory.
- Data logging.

Other

- "Watchdog" digital output for microprocessor life signal.

CHARACTERISTICS

Current, voltage and frequency

- DC voltage power supply input: 8 to 40V_{DC}, 750mA at 12V_{DC} and 400mA at 24V_{DC}.
- AC voltage inputs: 100 to 480V_{AC}, 100mA max. Neutral terminal does not need to be connected.
- AC current inputs: 0 to 5A, 1VA. Each phase is isolated from the others.
- AC current overload: 15A during 10s.
- Frequency measurement: 45 to 70 Hz – 15V_{AC} minimum between phase and neutral.
- Voltage control signal: The voltage control (AVR) is made either by a +/-10V_{DC} output with adjustable span and offset or by voltage+/- voltage- contacts.

Environment

- Operating temperature: -20 to +70°C
- Storage temperature: -30 to +80°C
- Humidity: 5 to 95%. Tropic-proof circuits for normal operation in humid conditions.
- IP65 : front panel / IP20 : rear panel

Inputs, outputs

- Digital inputs: NO or NC to ground.
- Emergency stop input: Normally Closed 24V.
- Relay outputs (crank and fuel): 5A. The 24V is provided through the emergency push button.
- Relay outputs (breakers): 5A, 230V_{AC} max. NO + NC available.
- Transistor outputs: 350mA, over-current protected.
- Analog inputs (oil pressure and water temp): 0 to 400 Ω. Calibration is configurable.
- Analog inputs (spare 1 and spare 2): 0 to 10 kΩ.
- Calibration for speed and frequency control, either by a +/-10V_{DC} output with adjustable span and offset or by speed+/-speed- contacts.
- Magnetic pick up input: 100 to 10kHz, 2V_{AC} minimum.
- PWM output for CAT and Perkins engines

Ports

- Isolated serial ports are available:
 - RS485 for Modbus RTU (read and write)/ male Sub-D 9 pins 120 Ω resistors selected by micro-switch.
 - CAN bus for inter-GENSYS/ MASTER 2.0 connection: male Sub-D 9 pins 120 Ω resistors selected by micro-switch
 - CAN bus dedicated to options J1939, I/O extensions: male Sub-D 9 pins 120 Ω resistors selected by micro-switch
 - Ethernet: PC communication/ Modbus TCP
 - SD card reader

Size and weigh

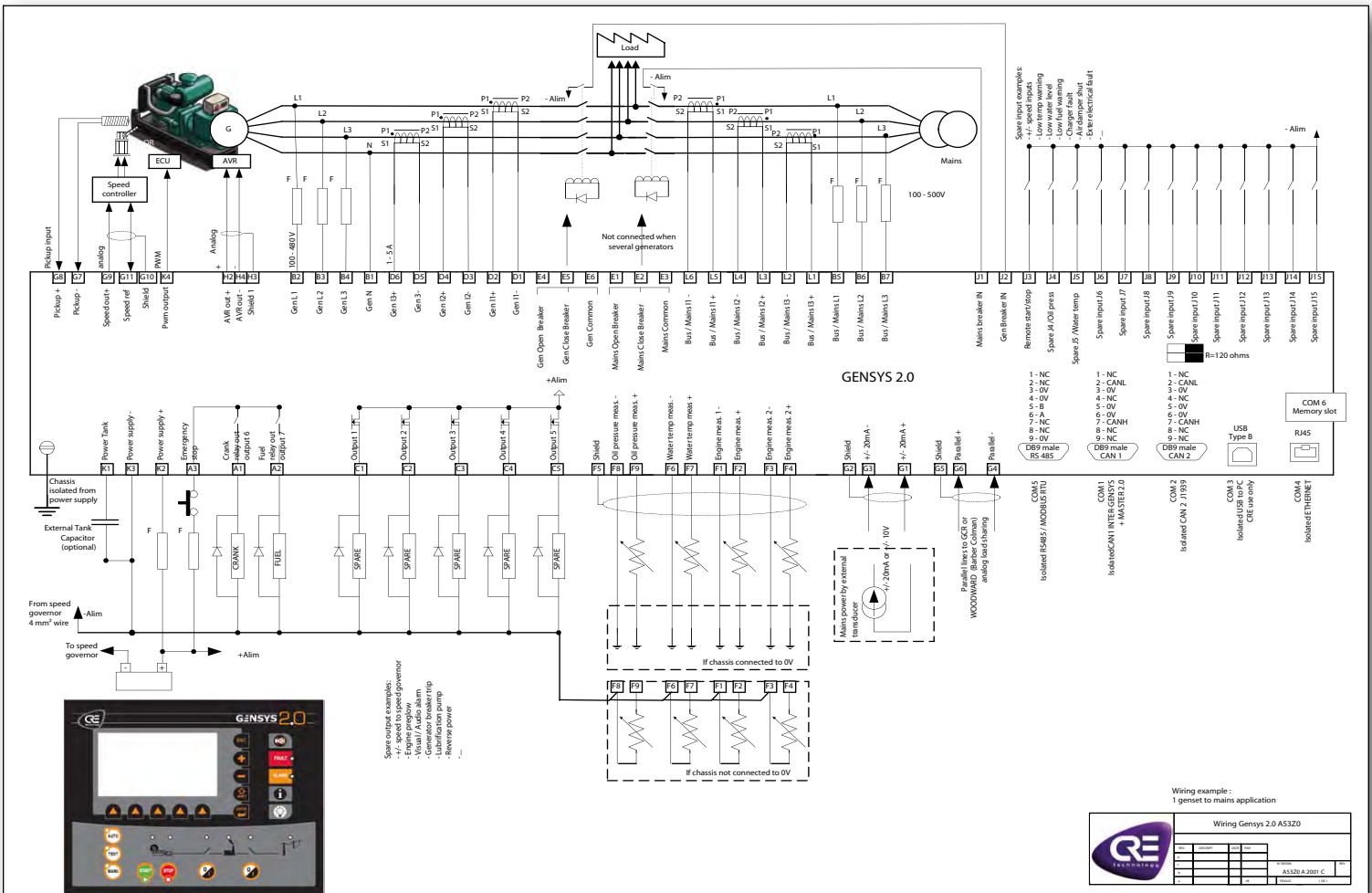
- Size: 248x197x57mm (9.76x7.76x2.24in)
- Panel cut out: 177x228mm (6.97x8.98in)
- Weight: 1.9kg (4.2lb)

Certifications

- European Union Directives: EN 50081-2, EN 50082-2, 73/23EEC

Other

- LCD characteristics: 114x64mm, 60 cd/m² backlight, 3 character sizes.
- Terminals: 2 piece connectors, 2,5mm².
- Languages: English, Spanish, French, Italian.
- Other custom languages: downlodable on request



PART NUMBER
A5320

SOFTWARE
CRE Config / Easy PLC

CABLE
A53W1

ASSOCIATED PRODUCTS
Reduced: GENSYS 2.0 LT
Complementary: MASTER 2.0

MASTER 2.0



All-in-one mains paralleling unit with integrated PLC

- Compact “all in one” module
- Fully compatible with GENSYS 2.0 and most analog lines modules
- Internal logic sequences, programmable by equations with the Easy PLC software
- Isolated ports: RS485, 2 CAN bus
- SD card reader, Ethernet
- All mains paralleling sequences management
- Large, multi-function graphic display
- Embedded web site



The MASTER 2.0 is a power plant controller for gensets in parallel with one or several mains.

This “all-in-one” unit includes all necessary functions:

- **Multi mains management**
- **Three phase mains failure detection**
- **Electrical protection**
- **Electrical parameters display**
- **Manual and automatic paralleling with mains (frequency, phase and voltage)**
- **kW power management with several modes:**
 - **No break change over with load transfer**
 - **Permanent paralleling in base load**
 - **Permanent paralleling in peak shaving mode**
- **Power factor control when paralleling with mains.**
- **Dyn11 capabilities (HV phase compensation)**
- **Analog control for all load sharing modules.**

PROGRAMMABLE EQUATIONS

The MASTER 2.0 controller is a real PLC unit where equations and sequences can be programmed directly by the user with text editor software or Easy PLC software.

INPUTS / OUTPUTS WITH NO LIMITS

The number of input/outputs that can be added is one of the most important on the market. Extension modules (DIN rail mounting) can be added on the CAN bus. You can add both digital and analog inputs/outputs.

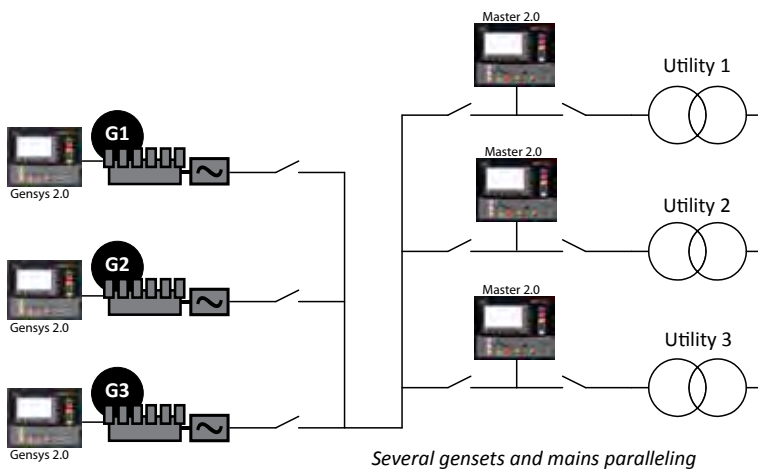
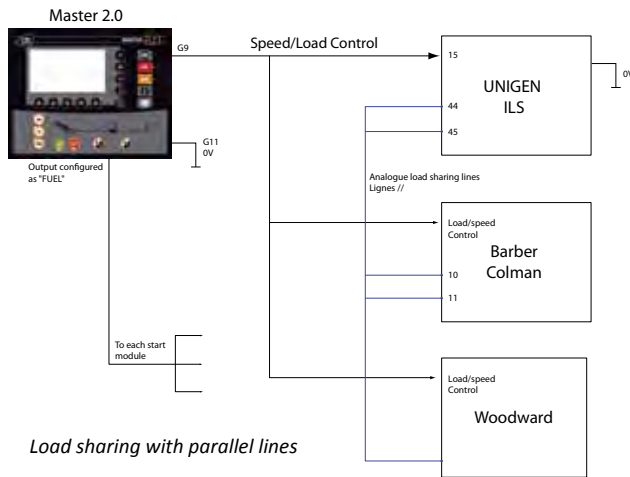
MAINS AND POWER PLANT ELECTRICAL PARAMETERS

Not only the MASTER 2.0 parallels the power plant with mains, it also protects the power plant and measures electrical parameters.

APPLICATIONS

- **Constant generating set power (base load) :**
In this mode, the generating sets provide constant power. Mains power varies according to the load.
- **Constant mains power (peak sharing) :**
In this mode, the mains power (imported or exported) remains constant. The generating sets vary their power according to the load.
- **Power plant control with several mains:**
 - 1 MASTER 2.0 per mains
 - No-break change-over with load transfer.
 - Transfer-switch unit control.

WIRING EXAMPLES



EXTENSIONS

With I/O external modules

A large range of modules are compatible with the MASTER 2.0 via CAN bus. You can add more than 250 analog and digital I/O:

- Analog inputs: PT100, 4-20mA, 0-10V, THK...
- Analog outputs: 4-20mA, 0-10V, PWM...
- Digital inputs
- Digital outputs

added value

EQUATIONS : Embed your knowledge!

MASTER 2.0 integrates a real PLC unit in which user equations and sequences can be written using a simple text editor or graphically designed using the Easy PLC software.



MASTER 2.0



FEATURES

- Power plant electrical parameters display:
 - Power plant overview
 - Generator state
 - Individual generator alarm
 - Phase-phase Voltage (3 phase RMS)
 - Phase-neutral Voltage (3 phase RMS)
 - Current (3 phase RMS)
 - Frequency
 - Active power (3 phase + total)
 - Reactive power (3 phase + total)
 - Power factor (3 phase + total)
 - Active power energy (kWh)
 - Reactive power energy (kVARh)
- Mains electrical parameters display:
 - Phase-phase voltage (3 phase RMS)
 - Phase-neutral voltage (3 phase RMS)
 - Current (3 phase RMS)
 - Frequency
 - Active power (3 phase + total)
 - Reactive power (3 phase + total)
 - Power factor (3 phase + total)
 - Active power energy (kWh)
 - Reactive power energy (kVARh)
- Manual and automatic frequency and phase synchronization (differential frequency meter + synchroscope available on screen).
- Manual and automatic voltage synchronization (differential voltmeter available on screen).
- Active power control (by CAN bus, up to 32 GENSYS 2.0/ Master 2.0 units).
- Power factor control (by CAN bus, up to 32 GENSYS 2.0/ MASTER 2.0 units).
- Power management with several mains.
- Phase sequence protection.
- Phase shift compensation (ie: Dyn11).

- Short-circuit protection.
- Generator electrical protections: <F, >F, <U, >U, >I, >In, >P, <P, <-P, >Q, <Q, <-Q
- Mains electrical protections (option) : <F, >F, <U, >U, >P, <P, <-P, >Q, <Q, <-Q, phase shift, df/dt.
- The last 50 alarms and last 50 faults are recorded in non volatile memory.

CHARACTERISTICS

Current, voltage and frequency

- DC voltage power supply input: 8 to 40V_{DC}, 750mA at 12V_{DC} and 400mA at 24V_{DC}.
- AC voltage inputs: 100 to 480V_{AC}, 100mA max. Neutral terminal does not need to be connected.
- AC current inputs: 0 to 5A, 1VA. Each phase is isolated from the others.
- AC current overload: 15A during 10s.
- Frequency measurement: 45 to 70 Hz – 15V_{AC} minimum between phase and neutral.
- Digital inputs: NO or NC to ground.
- Emergency stop input: normally closed, 24V.
- Relay outputs: 5A. The 24V is provided via the emergency push button.
- Relay outputs (breakers): 5A, 230V_{AC} max. NO + NC available.
- Transistor outputs: 350mA, over-current protected.

Inputs and outputs

- 2 analog inputs: 0 to 400 Ω . Calibration is configurable.
- 2 analog inputs (spare 1 and spare 2): 0 to 10k Ω . Calibration is configurable.
- Analog input (+/-20mA or +/-10V): 50 Ω (current) or 20 K Ω (voltage).
- Analog output between +/- 10 V_{DC}

Ports

- Isolated communication ports are available:
 - RS485 for Modbus RTU (read and write)/ male Sub-D 9 pins 120 Ω resistors selected by micro-switch.
 - CAN bus for inter-GENSYS/ MASTER 2.0/GENSYS 2.0 COREconnection: male Sub-D 9 pins 120 Ω resistors selected by micro-switch
 - CAN bus dedicated to options I/O extensions: male Sub-D 9 pins 120 Ω resistors selected by micro-switch
 - Ethernet: PC communication/ Modbus TCP
 - SD card reader

Environment

- Operating temperature: 0°C to +55°C
- Storage temperature: -30 to +70°C
- Humidity: 5 to 95%. Circuits tropicalization for normal operation in humid conditions. Front panel: IP65 protection. Rear panel: IP20 protection.

Size and weight

- Size: 248x197x57mm (9.76x7.76x2.24in)
- Panel cut out: 228x177 mm (8.98x6.97 in)
- Mounting: functions in any position, but visibility of the display should be taken into account.
- Weight: 1.9kg (4.2lb)

Certifications

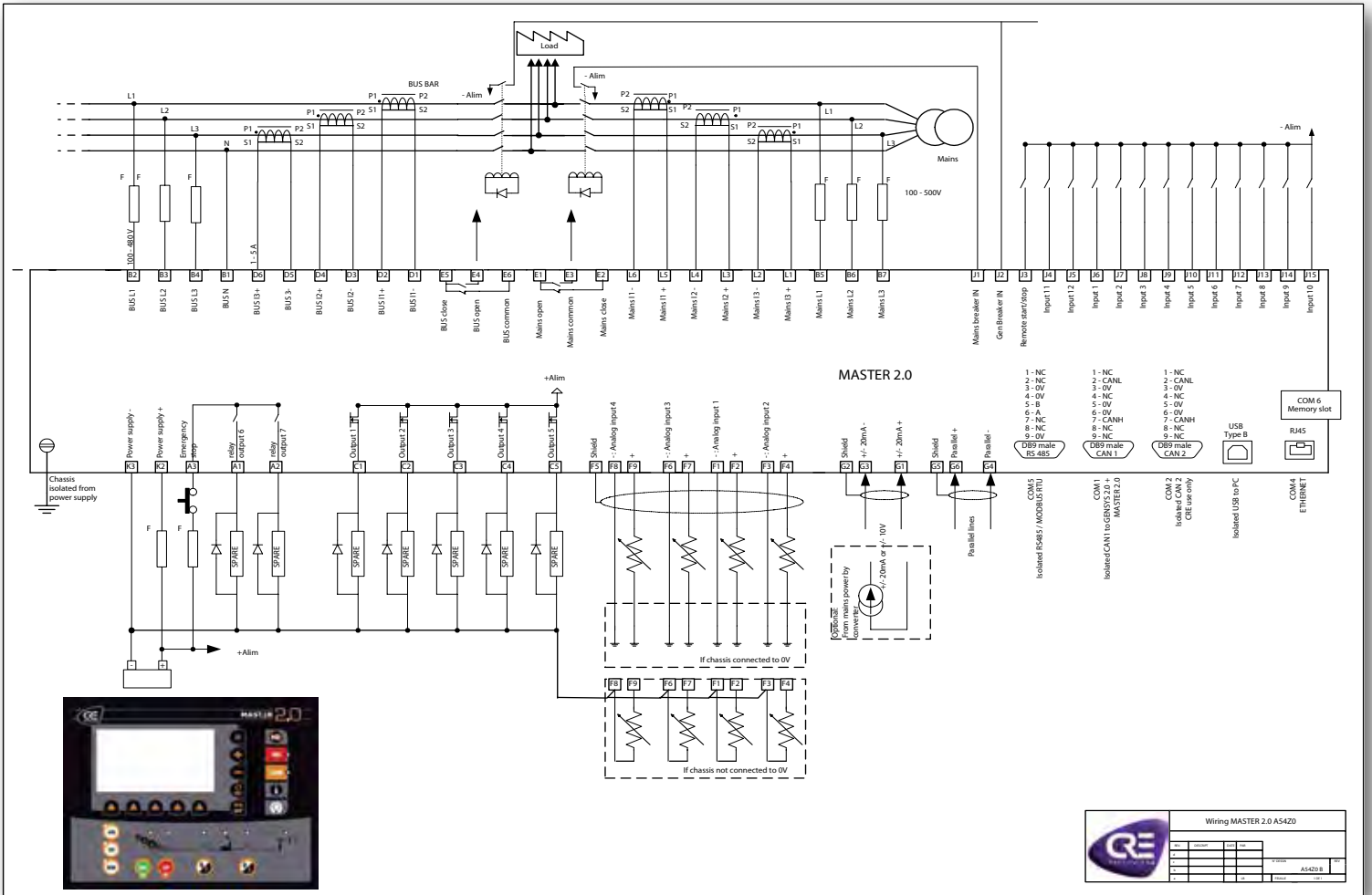
- European union directives: EN 50081-2, EN 50082-2, 73/23EEC

Other

- LCD characteristics: 114x64mm, 60 cd/m² backlight, 3 character sizes.
- Terminals: 2 piece connectors, 2,5mm².
- Standard languages: English, Spanish, French, Italian
- Other custom languages: downlodable on request

CABLES AND CONNECTORS

- A53W1: Master 2.0 to PC cable - USB/USB - 3m.
- A40W8: CAN@ inter GENSYS 2.0 / MASTER 2.0 cable for 2 generators - DB9/DB9 - 7m.
- A40W2: CAN@ inter GENSYS 2.0 / MASTER 2.0 cable for more than 2 generators or CANopen@ I/O modules - DB9/free wires - 7m.
- A40W3: DB9/Terminals connector to be used with more than 2 generators for double connection (with screws).
- A40W4: communication cable (RS485, CAN, RS232) – per meter.



PART NUMBER
A5420

SOFTWARE
CRE Config / Easy PLC

CABLE
A53W1

ASSOCIATED PRODUCTS
Reduced: CPA
Complementary: GENSYS 2.0